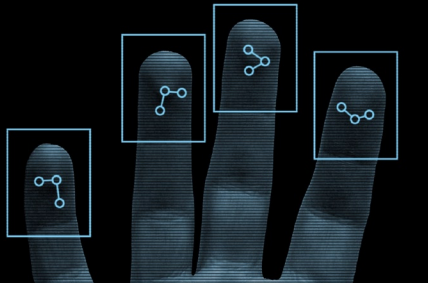




workforce management
made easy



ITR-700 Series

It's about time: robust, reliable data collection.

- Flat message display with 2 lines and 16-characters for messages or transactional confirmations
- Flexible units with connectivity through built-in TCP/IP, modem or wireless options
- Ideal for industry: relay logic outputs to enable bells, lights, buzzers, etc.
- Operates with Smart Card, magnetic, barcode or proximity readers
- Wall mounting system for secure installation



ITR-785

ITR-765 or ITR-785: the choice is yours.

Efficient and reliable terminals, the ITR-765 and ITR-785 are ideally suited for tracking time and attendance and collecting multiple levels of labor costing data and production levels by individuals or departments. The form and functionality of these units make them an excellent choice for office environments, while the durable casings are robust enough to easily accommodate the harsh conditions often found in plants and warehouses.

Optional biometrics on the ITR-785 improve accuracy and ensure high-level security through the authentication of employees. This feature-rich fingerscan terminal not only provides attendance and job reporting tracking; it also enables your organization to monitor and record employee movement within the facility. As well, this terminal eliminates time fraud through "buddy punching" and solves the problem and expense of managing lost, stolen or forgotten employee badges. The ITR-785 can be programmed to identify employees by fingerscan only, or may be used in conjunction with PIN numbers or badges for verification.

ITR supports its customers through a network of regional offices and a central Customer Care Center.

ITR-700 Series

Optional biometrics improve accuracy and ensure high-level security through the authentication of employees.



ITR-765

Programming

ITR's clock communication software enables the terminal to:

- Operate differently according to the day of the week
- Provide single/multi-step or conditional reporting
- Validate data
- Select the input source (magnetic reader, keyboard, etc.)
- Display the information from the internal database

General Features

- Scheduling for required functions - e.g., for morning and evening periods, set the terminal for "swipe & go;" during the day, leave it set to record jobs.
- Technician Mode is available for easy set-up of the terminal.
- Enable the activation of a bell according to the day of the week, regardless of the program that runs on the terminal.
- Scheduling modem operation times.
- Display time in several formats (US, European, military or 12-hour).
- Automatically changes for daylight savings time.

Technical Specifications

Includes:

- Relays for bell, door, etc.
(ITR-765: 1; ITR-785: 2)
- Sensors - door monitoring etc.
(ITR-765: 1; ITR-785: 2)
- Additional serial ports for scale or printers
- 12C bus for expansion of I/O

Memory:

- 512 KB, battery-backed
- Dynamic distribution of memory mapping
- Single record updating method

Display:

- Backlit LCD, 2 rows of 16 characters
- Alarm LED for irregularities notification

Keyboard:

- Function keys: ITR-765 (6) and ITR-785 (8)
- 10 numeric keys
- 2 browsing keys
- 4 control keys

Readers:

- Barcode (3-of-9, interleaved 2-of-5, code 128)
- Magnetic (track I, II and III)
- Proximity (contactless at 125 kHz)
- Weigand HID (26,34,36,37,44,48 bit)
- Mifare reader
- Indala reader
- iClass Mifare Smart Card

Power Requirements:

- Operating power - 110/230 V AC @ 100 mA
- Back-up battery - rechargeable included

Physical Characteristics:

- Height: 6.7 inches (17 cm)
- Width: 9.8 inches (25 cm)
- Depth: 3.7 inches (9.5 cm)
- Operating Temp.: -4 to 140 °F (-20 to 60 °C)
- Humidity: up to 95% RH

Interfacing:

- RS-485 for up to 32 terminals
- RS-232 for Host connection
- TCP/IP - 10/100 Mb Ethernet card; DHCP compatible; PoE (optional)
- 14,400 bps internal modem (optional)
- Wireless WI-FI 802.11 (optional)
- Bluetooth Class II (optional)

ITR-785: Optional Fingerprint Recognition Module

- Active Capacitive Sensor
 - Large active area - 12.8 x 18.0 mm (256 X 360 pixel active array)
 - Solid state sensor
 - High image resolution of 508 dpi
- Template size 350 B
- Response time 3 seconds max.
- Security levels 5
- False accept/reject 0.001
- Template storage 9000



International Time Recorder Company Limited

7A Taymall Avenue
Toronto, Ontario M8Z 3Y8
Canada

Tel: 416-252-1186
Fax: 416-255-1565
Toll Free: 1-877-567-0633
info@itr.ca