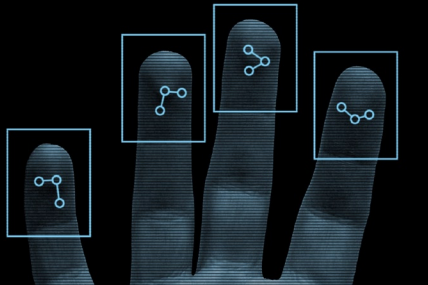




**workforce management**  
made easy



## ITR HandPunch®

Put your hands on the accurate, affordable solution.  
**When you want to cut time and attendance costs... do it by hand.**

- Saves money over card-based systems
- Fast and easy to use
- Eliminates badges
- Eliminates buddy punching



ITR supports its customers through a network of regional offices and a central Customer Care Center.

### HandPunch®

The HandPunch® now brings the accuracy and convenience of biometric technology easily within reach of organizations of all sizes. Using proven hand geometry biometric technology, the HandPunch® is non-invasive and easy to use for employees. This unit is suitable for different types of working environments, and will operate in even harsh and dirty working conditions.

Every HandPunch® sold by ITR is delivered to the customer pre-installed with ITR's communication software, enabling immediate, seamless integration with your workforce management system.

### Hand Geometry Technology

The HandPunch® uses field-proven hand geometry biometric technology. The terminal captures a three-dimensional image of the hand

each time the employee punches. The hand's size and shape are used to verify the employee's identity with unparalleled accuracy. No fingerprints or palm prints are utilized. Green and red lights notify the employee of the status of each punch. There's no question any more; employees have to be there to punch.

### Programmable Keys

Certain HandPunch® models have two user-definable data management keys that let you collect data as employees punch. Common uses include department transfers, tips collected, job codes, or pay codes. Multi-level data entry sequences may be defined. Data management keys can be set to allow employees to review their past punches. To reduce keystrokes, the keys can also be set to automatically enter data such as a frequently used department number or in/out status.

**TIMEZONE™ WEB**

# ITR HandPunch®

Every HandPunch® sold by ITR is delivered to the customer pre-installed with ITR's communication software, enabling immediate, seamless integration with your workforce management system.

## Communication Options

Standard communication to the HandPunch® is provided via RS-232 direct communication. Certain models can be networked together via RS-485 for multi-unit installations. An Ethernet communications module and dial up modems are also available on certain models.

## Edit-at-the-Clock Functions

Certain HandPunch® models allow supervisors to override user restrictions and to input such items as missed punches, planned vacations, and sick time at the terminal. The password-protected mode provides greater supervisor flexibility by reducing the need for computer edits.

## Bell Schedules

The bell schedule option available on certain HandPunch® models lets you program the day, time and duration of a series of bells. The bells can be programmed to signal the beginning or end of a shift, lunch, or break.

## Door Control

Certain HandPunch® models provide the capability to unlock and monitor a door. Global time zones may be used to restrict employee access.

## Technical Specifications

### Size:

- 8.85 in. (23.3 cm.) wide
- 11.65 in. (29.6 cm.) high
- 8.55 in. (21.7 cm.) deep

### Weight:

- 6 lbs. (2.7 kg)

### Power Requirements:

- 12-24 V DC or  
12-24 V AC 50/60 Hz

### Verification Time:

- Less than 1 second

### Memory Retention:

- Up to 5 years via the standard internal lithium battery

### Transaction Buffer:

- HP-1000E/1000/2000/3000:  
5,187 transactions
- HP-4000: 8,190 transactions

### ID Number Length:

- 1 to 10 digits

### Baud Rate:

- 300 - 28.8K bps

### Communications:

- HP-1000E - Ethernet only
- HP-1000 - RS-232, modem
- HP-2000 - RS-232, modem
- HP-3000/4000 - Ethernet, RS-232, modem, RS-485 (4 and 2 wire); RS-232 serial printer output support

### User Capacity:

- HP-1000E - 100 users
- HP-1000 - 50 users, internally expandable to 512
- HP-2000 - 512 users
- HP-3000 - 512 users, internally expandable to 32,512
- HP-4000 - 530 users, internally expandable to 3,498

### Door Controls:

(HP-3000/4000 only):

- Door lock output  
(sinks 0-24 V DC, 100mA max.)
- Door switch monitoring
- Bell ring output (sinks 0-24 V DC, 100mA max.)

### Options:

- Operational battery backup (all models)
- High speed internal modem (all models)
- Ethernet communications module - HP-3000/4000
- Data converter (RS-232 to RS-485) - HP-3000/4000
- Memory expansion: see User Capacity
- 62 user definable time - HP-3000/4000



## International Time Recorder Company Limited

7A Taymall Avenue  
Toronto, Ontario M8Z 3Y8  
Canada

Tel: 416-252-1186  
Fax: 416-255-1565  
Toll Free: 1-877-567-0633  
[info@itr.ca](mailto:info@itr.ca)